



# CCRL1 Polyclonal Antibody

<b>Catalog No</b>	YP-Ab-13168
<b>Isotype</b>	IgG
<b>Reactivity</b>	Human;Mouse
<b>Applications</b>	WB;IF;ELISA
<b>Gene Name</b>	CCRL1
<b>Protein Name</b>	C-C chemokine receptor type 11
<b>Immunogen</b>	The antiserum was produced against synthesized peptide derived from human CCRL1. AA range:291-340
<b>Specificity</b>	CCRL1 Polyclonal Antibody detects endogenous levels of CCRL1 protein.
<b>Formulation</b>	Liquid in PBS containing 50% glycerol, 0.5% BSA and 0.02% sodium azide.
<b>Source</b>	Polyclonal, Rabbit,IgG
<b>Purification</b>	The antibody was affinity-purified from rabbit antiserum by affinity-chromatography using epitope-specific immunogen.
<b>Dilution</b>	Western Blot: 1/500 - 1/2000. Immunofluorescence: 1/200 - 1/1000. ELISA: 1/40000. Not yet tested in other applications.
<b>Concentration</b>	1 mg/ml
<b>Purity</b>	≥90%
<b>Storage Stability</b>	-20°C/1 year
<b>Synonyms</b>	CCRL1; CCBP2; CCR11; VSHK1; C-C chemokine receptor type 11; C-C CKR-11; CC-CKR-11; CCR-11; CC chemokine receptor-like 1; CCRL1; CCX CKR
<b>Observed Band</b>	40kD
<b>Cell Pathway</b>	Early endosome . Recycling endosome . Cell membrane ; Multi-pass membrane protein . Predominantly localizes to endocytic vesicles, and upon stimulation by the ligand is internalized via caveolae. Once internalized, the ligand dissociates from the receptor, and is targeted to degradation while the receptor is recycled back to the cell membrane.
<b>Tissue Specificity</b>	Predominantly expressed in heart. Lower expression in lung, pancreas, spleen, colon, skeletal muscle and small intestine.
<b>Function</b>	function:Receptor for CCL2, CCL8, CCL13, CCL19, CCL21 and CCL25.,similarity:Belongs to the G-protein coupled receptor 1 family.,tissue specificity:Predominantly expressed in heart. Lower expression in lung, pancreas, spleen, colon, skeletal muscle and small intestine.,
<b>Background</b>	The protein encoded by this gene is a member of the G protein-coupled receptor family, and is a receptor for C-C type chemokines. This receptor has been shown to bind dendritic cell- and T cell-activated chemokines including CCL19/ELC, CCL21/SLC, and CCL25/TECK. A pseudogene of this gene is found on chromosome 6. Alternatively spliced transcript variants encoding the same protein have been described. [provided by RefSeq, Jul 2013],



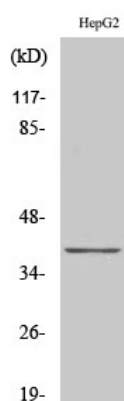
### matters needing attention

Avoid repeated freezing and thawing!

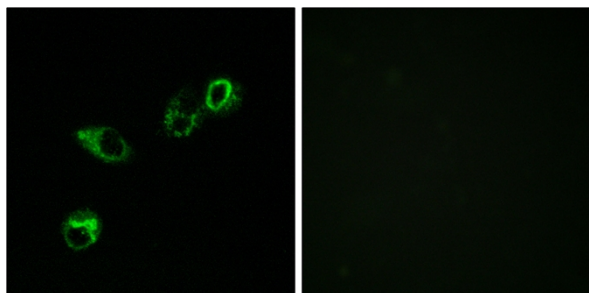
### Usage suggestions

This product can be used in immunological reaction related experiments. For more information, please consult technical personnel.

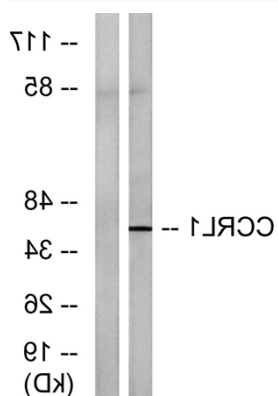
## Products Images



Western Blot analysis of various cells using CCRL1 Polyclonal Antibody



Immunofluorescence analysis of MCF7 cells, using CCRL1 Antibody. The picture on the right is blocked with the synthesized peptide.



Western blot analysis of lysates from HepG2 cells, using CCRL1 Antibody. The lane on the right is blocked with the synthesized peptide.